

E-Prime 3

E-PRIME3

The Most Comprehensive Software Available for Behavioral Research

E-Prime is the world leading stimulus presentation software. Build your own experiments using E-Prime's easy-to-use graphical interface. Design, collect and analyze data – all within a few hours! Present stimuli and collect responses with millisecond precision.

Bring your E-Prime 2.0 experiments into E-Prime 3.0 or install E-Prime 2.0 and E-Prime 3.0 side-by-side

- Button sub-object for response collection
- Choice and Slider sub-objects for surveys and recalls
- Slide Layout Templates for quick design
- Online Experiment Library
- Auto-generate text data files with columns of interest
- Interactively run List rows for runtime or debug
- Create conditional Task Events using subroutines
- Find and replace object properties in experiment
- Start experiment from any List object
- Run an experiment in floating window for debug
- Improved audio/video playback and load time
- Runtime support for tablet and touchscreens
- New Task Events
- Improved user interface
- Online Documentation

Resources for Users

- Online Experiment Library
- Technical support
- Knowledge Base and Documentation
- Samples and Tutorials
- User Forum
- How to Videos
- Webinars and trainings



E-Prime 3

Pricing

Single Licensing Options:

E-Prime 3.0	\$995
E-Prime 3.0 Runtime	\$125

Network Licensing Options:

E-Prime 3.0	\$796 per seat (10 seat min.)
-------------	----------------------------------

Upgrades*:

E-Prime 2.0 Single-User to E-Prime 3.0 Single-User	\$795
-------------------------------------------------------	-------

E-Prime 2.0 Network to E-Prime 3.0 Network	Contact us for a quote
-----------------------------------------------	---------------------------

*Requires previous purchase of a full E-Prime 2.0 system. Prices are in USD and do not include shipping and handling. Prices are subject to change without notice.

Machine Requirements

E-Prime 2.0 is compatible with PCs running Microsoft® Windows® 7 SP1 32-bit/Windows 7 SP1 64-bit/Windows 8.1 64-bit/Windows 10 64-bit.

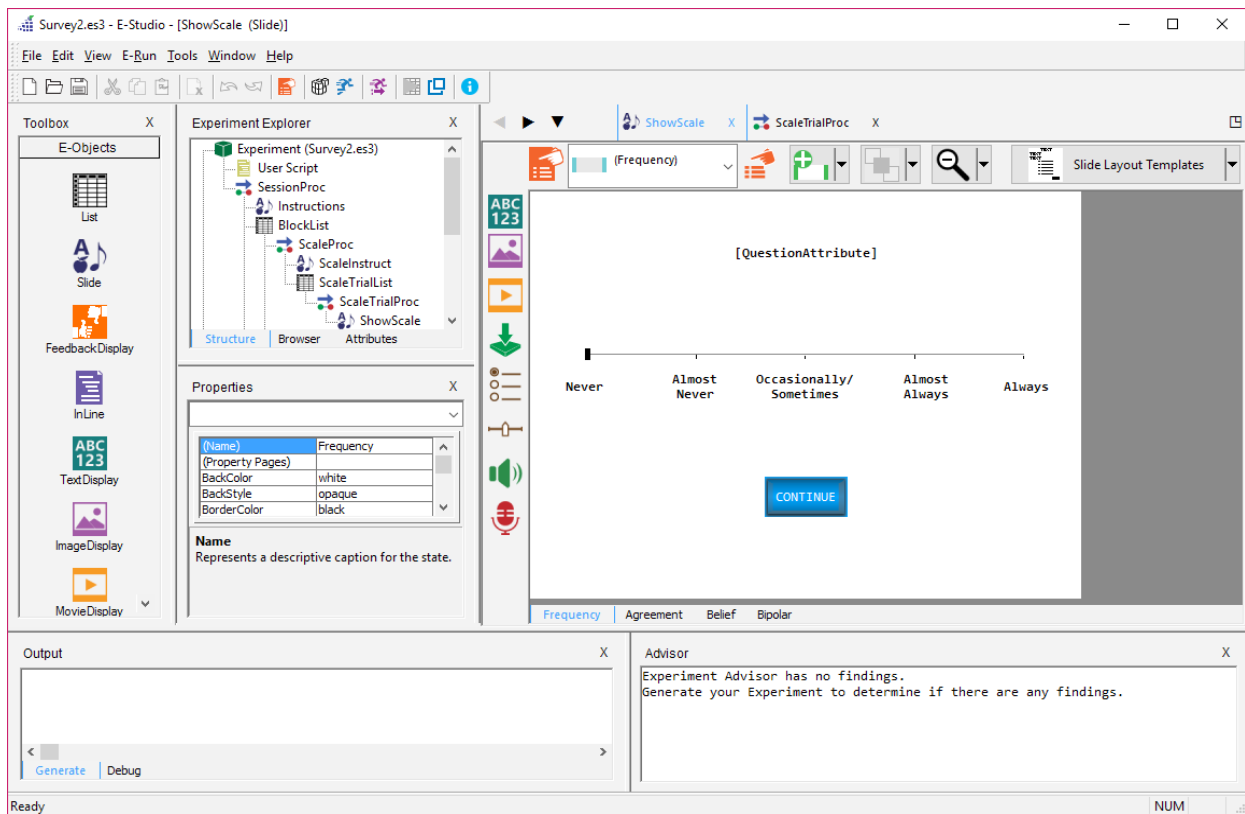
Minimum

- Pentium i3 Processor
- 2 GB RAM
- DirectX™ video card**
- USB Port

Recommended

- Pentium i7 Processor 2Ghz or higher
- 4 GB RAM or higher
- DirectX™ 11 video card with 128M RAM or higher
- Chronos® or a Core Audio sound card compatible for audio presentation
- CD-ROM
- USB Port
- Internet connection

**DirectX™ 11 Hardware Acceleration required for Windows 8.1 and above. Please use the recommended hardware requirements for millisecond accurate timing while playing movies.



311 23rd Street Ext.,
Suite 200
Sharpsburg, PA 15215-2821
USA

Phone: 412.449.0078
Fax: 412.449.0079
E-Mail: sales@pstnet.com
Web: www.pstnet.com

